

N



S. Alma School Road

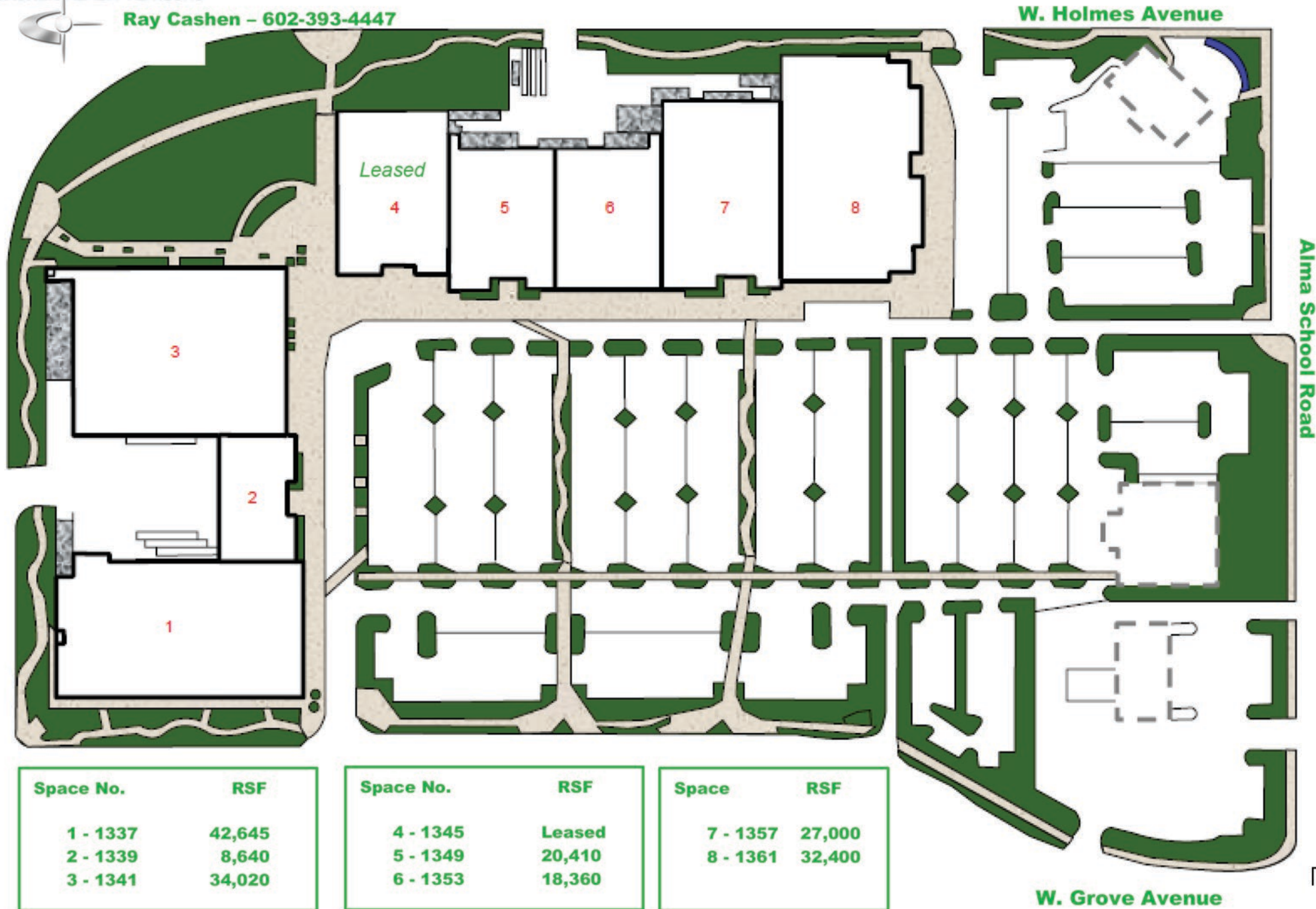
42,645 S.F.

42,645 S.F.

Mesa Fiesta Center

CASHEN REALTY ADVISORS

Ray Cashen - 602-393-4447



FINAL PLAT

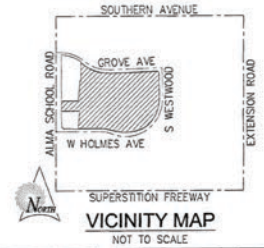
FOR

MESA FIESTA

A PORTION OF THE NORTHWEST QUARTER OF SECTION 33, TOWNSHIP 1 NORTH,
RANGE 5 EAST, GILA AND SALT RIVER MERIDIAN
MARICOPA COUNTY, ARIZONA

OFFICIAL RECORDS OF
MARICOPA COUNTY RECORDER
ADRIAN FONTES
20180933526 12/20/2018 02:42
BOOK 1430 PAGE 33
ELECTRONIC RECORDING

PLAT1-3-1-1-M-
Yorkm



CURVE TABLE			
NO.	RADIUS	LENGTH	DELTA
C1	450.00'	318.95'	40°36'36"
C2	450.00'	333.79'	42°29'58"
C3	450.00'	247.20'	31°28'30"
C4	450.00'	629.20'	80°06'42"
C5	450.00'	167.00'	21°15'46"

CURVE TABLE			
NO.	RADIUS	LENGTH	DELTA
C6	410.00'	21.73'	3°02'12"
C7	490.00'	363.46'	42°29'58"
C8	410.00'	344.33'	48°07'07"
C9	292.50'	133.34'	26°07'12"
C10	398.00'	194.55'	28°00'26"

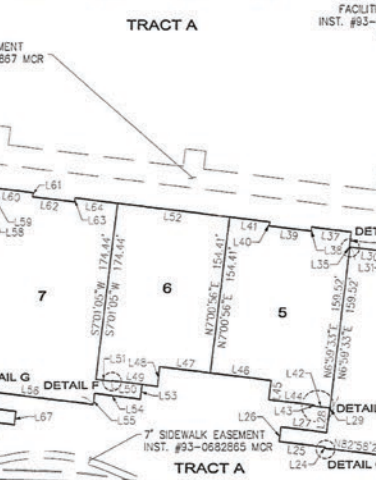
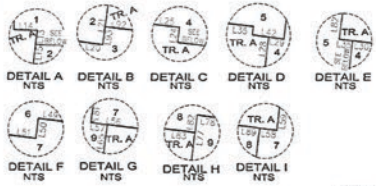
CURVE TABLE			
NO.	RADIUS	LENGTH	DELTA
C11	490.00'	106.62'	12°28'02"
C12	409.60'	169.52'	23°42'47"
C13	410.00'	174.81'	24°25'44"

LINE TABLE		
NO.	BEARING	LENGTH
L1	S88°59'55"E	54.99'
L2	N88°59'55"W	13.02'
L3	N45°06'03"W	24.35'
L4	N74°54'14"E	51.73'

LINE TABLE		
NO.	BEARING	LENGTH
L5	N88°38'02"W	2.73'
L6	S1°26'07"W	83.61'
L7	N88°51'34"W	26.73'
L8	N1°25'34"E	51.89'
L9	N88°50'14"W	39.84'
L10	N1°03'26"E	8.25'
L11	N88°18'48"W	76.15'
L12	N88°56'12"W	74.89'
L13	N6°59'27"E	0.33'
L14	N88°36'23"W	3.21'
L15	S6°59'27"W	30.75'
L16	S84°57'33"E	4.02'
L17	S7°06'26"W	41.54'
L18	N82°35'37"W	4.02'
L19	S71°59'59"W	30.56'
L20	S82°55'53"E	64.69'
L21	N7°06'38"E	110.06'
L22	N6°59'53"E	35.23'
L23	N82°56'08"W	25.19'
L24	N7°06'56"E	1.01'
L25	N82°53'44"W	44.88'
L26	N71°7'07"E	14.47'
L27	S82°49'48"E	44.84'
L28	N7°06'56"E	24.58'
L29	S82°52'13"E	0.35'
L30	S82°48'51"E	41.69'
L31	S7°06'28"W	7.32'
L32	S83°00'07"E	41.47'
L33	N6°18'19"E	7.30'
L34	S82°58'00"E	41.89'
L35	N82°51'57"W	0.42'
L36	S6°59'41"W	14.84'

LINE TABLE		
NO.	BEARING	LENGTH
L37	S82°53'36"E	38.97'
L38	N7°28'13"E	3.98'
L39	S82°56'21"E	41.31'
L40	S82°7'20"W	3.93'
L41	S82°59'17"E	39.41'
L42	N82°50'10"W	15.41'
L43	N7°18'19"E	0.82'
L44	N83°03'23"W	44.88'
L45	N6°38'16"E	19.19'
L46	N82°58'50"W	59.71'
L47	N82°58'50"E	49.76'
L48	N6°33'09"E	19.46'
L49	S83°07'14"E	45.06'
L50	N6°24'29"E	0.42'
L51	S83°21'50"E	15.43'
L52	N83°00'56"W	110.08'
L53	S6°13'47"W	14.74'
L54	N82°34'35"W	44.95'
L55	S7°02'48"W	11.20'
L56	N82°55'52"W	125.41'
L57	N82°58'58"W	0.41'
L58	S82°56'42"E	0.56'
L59	N7°06'25"E	10.09'
L60	N82°53'36"W	41.35'
L61	S71°53'53"W	3.94'
L62	S82°53'32"E	41.37'
L63	N8°02'09"E	3.97'
L64	S83°00'30"E	41.73'
L65	S6°58'37"W	16.06'
L66	S82°55'55"E	50.91'
L67	S7°56'07"W	13.43'
L68	N83°00'35"W	50.69'

LINE TABLE		
NO.	BEARING	LENGTH
L69	S6°58'37"W	40.39'
L70	N83°06'48"W	75.94'
L71	N71°7'12"E	9.47'
L72	N82°40'50"W	36.91'
L73	N6°47'21"E	37.21'
L74	N82°59'34"W	9.78'
L75	N7°01'38"E	76.36'
L76	S83°37'40"E	9.92'
L77	N7°04'19"W	13.84'
L78	S83°01'00"E	49.93'
L79	N6°39'33"E	12.87'
L80	S83°04'26"E	62.31'
L81	S6°54'44"W	80.06'
L82	S7°01'12"W	0.29'
L83	S83°27'56"E	9.96'
L84	S7°04'15"W	75.82'
L85	N82°41'09"W	10.52'
L86	S7°01'01"W	36.97'
L87	N83°03'29"W	36.97'
L88	S6°59'22"W	9.88'
L89	N82°58'31"W	74.66'
L90	S7°04'03"W	109.29'
L91	S82°55'45"E	74.38'
L92	N82°59'36"W	112.05'
L93	S7°03'31"W	0.35'
L94	N46°41'16"E	24.23'
L95	S66°34'20"E	27.79'
L96	N27°49'39"W	66.44'
L97	S0°07'14"W	41.13'



LEGEND

- SIGN
- & HANDICAP
- LIGHT POLE
- WATER METER
- FIRE HYDRANT
- SANITARY SEWER MANHOLE
- BOLLARD
- FLOOD LIGHT
- SECTION MONUMENT
- CATCH BASIN
- INTERSECTION MONUMENT
- STORM DRAIN MANHOLE
- ELECTRIC JUNCTION BOX
- WATER METER
- CHECK VALVE
- ▲ ELECTRIC TRANSFORMER
- FIRE DEPARTMENT CONNECTOR
- GAS VALVE
- TELEPHONE MANHOLE
- CABLE TELEVISION RISER
- AIR RELEASE VALVE
- PALM
- TREE
- CLEAN OUT
- TELEPHONE RISER
- PROPERTY CORNER
- CHEASED "X"
- IRRIGATION VALVE

A203094

ASAP
ARIZONA SURVEYING & PLANNING

SUNRISE ENGINEERING

2132 SOUTH VINEYARD, SUITE 133
MESA, ARIZONA 85210
TEL: 480-788-8600 • FAX: 480-788-8609
www.sunrise-eng.com

DIMENSION FINANCIAL & REALTY INVESTMENTS

MESA FIESTA
FINAL PLAT

30 NO	DESIGNED	DRAWN	CHECKED	SHEET NO
05/18	1/5/17	KSH	JRD	3 of 3

ALMA SCHOOL ROAD

S WESTWOOD

W HOLMES AVE

NW COR SEC 33
T1N, R5E, G&SRM

816.50'

356.48'

816.50'

631.00'

847.70'

WEST 1/4 COR SEC 33
T1N, R5E, G&SRM

S:\Information Systems\Projects\2018\12\12\18\0933526\12-20-2018\02-42\02-42-2018-02-42.dwg