

N



S. Alma School Road

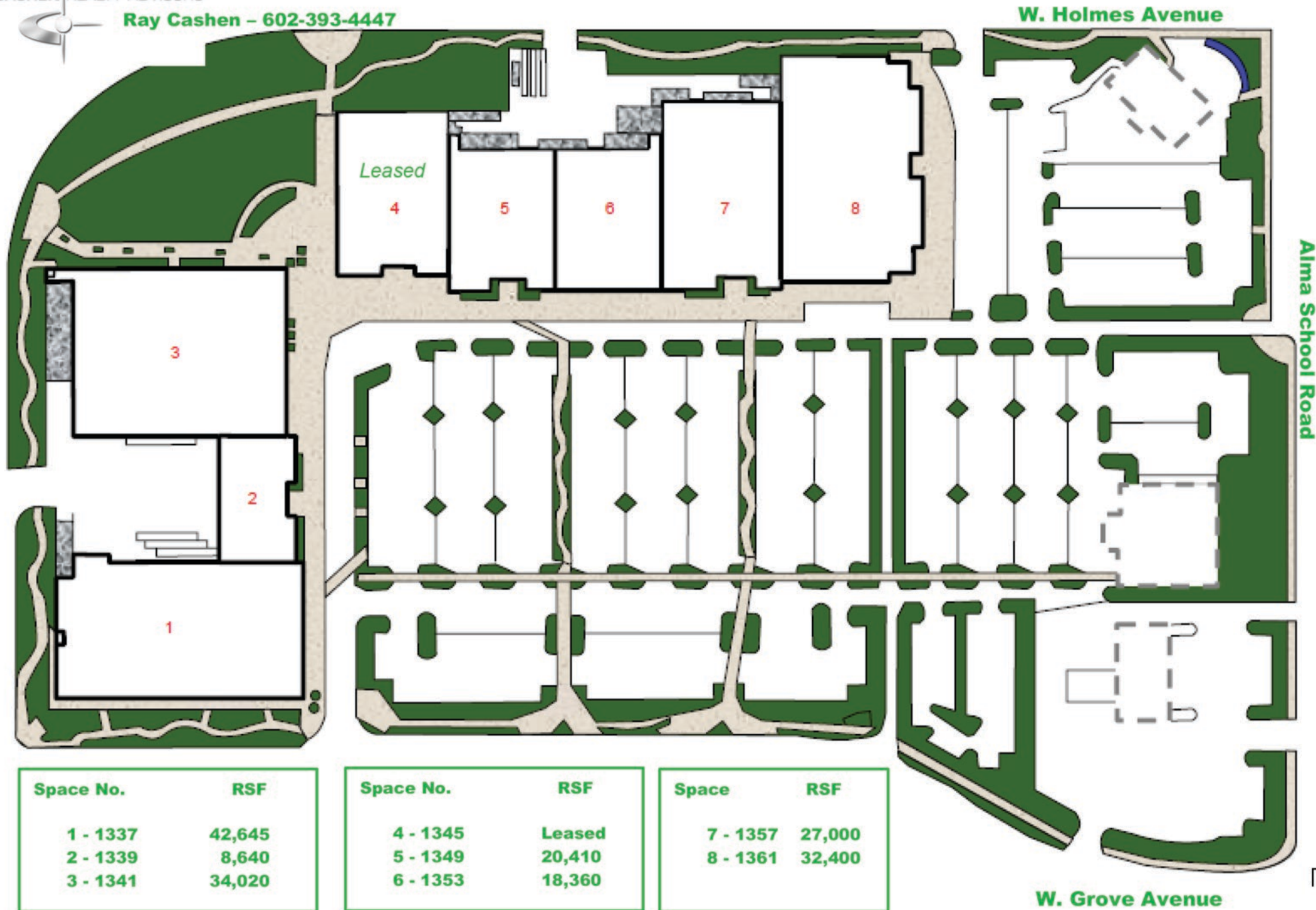
8,640
S.F.

8,640 S.F.

Mesa Fiesta Center

CASHEN REALTY ADVISORS

Ray Cashen - 602-393-4447



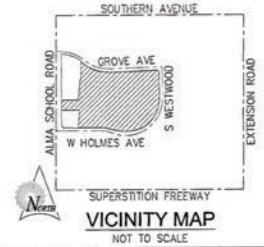
FINAL PLAT

FOR
MESA FIESTA

A PORTION OF THE NORTHWEST QUARTER OF SECTION 33, TOWNSHIP 1 NORTH,
RANGE 5 EAST, GILA AND SALT RIVER MERIDIAN
MARICOPA COUNTY, ARIZONA

OFFICIAL RECORDS OF
MARICOPA COUNTY RECORDER
ADRIAN FONTES
20180933526 12/20/2018 02:42
BOOK 1430 PAGE 33
ELECTRONIC RECORDING

PLAT1-3-1-1-M-
Yorkm



| CURVE TABLE | | | |
|-------------|---------|---------|-----------|
| NO. | RADIUS | LENGTH | DELTA |
| C1 | 450.00' | 318.95' | 40°36'36" |
| C2 | 450.00' | 333.79' | 42°29'58" |
| C3 | 450.00' | 247.20' | 31°28'30" |
| C4 | 450.00' | 629.20' | 80°06'42" |
| C5 | 450.00' | 167.00' | 21°15'46" |

| CURVE TABLE | | | |
|-------------|---------|---------|-----------|
| NO. | RADIUS | LENGTH | DELTA |
| C6 | 410.00' | 21.73' | 3°02'12" |
| C7 | 490.00' | 363.46' | 42°29'58" |
| C8 | 410.00' | 344.33' | 48°07'07" |
| C9 | 292.50' | 133.34' | 26°07'12" |
| C10 | 398.00' | 194.55' | 28°00'26" |

| CURVE TABLE | | | |
|-------------|---------|---------|-----------|
| NO. | RADIUS | LENGTH | DELTA |
| C11 | 490.00' | 106.62' | 12°28'02" |
| C12 | 409.60' | 169.52' | 23°42'47" |
| C13 | 410.00' | 174.81' | 24°25'44" |

| LINE TABLE | | |
|------------|-------------|--------|
| NO. | BEARING | LENGTH |
| L1 | S88°59'55"E | 54.99' |
| L2 | N88°59'55"W | 13.02' |
| L3 | N45°06'03"W | 24.35' |
| L4 | N74°54'14"E | 51.73' |

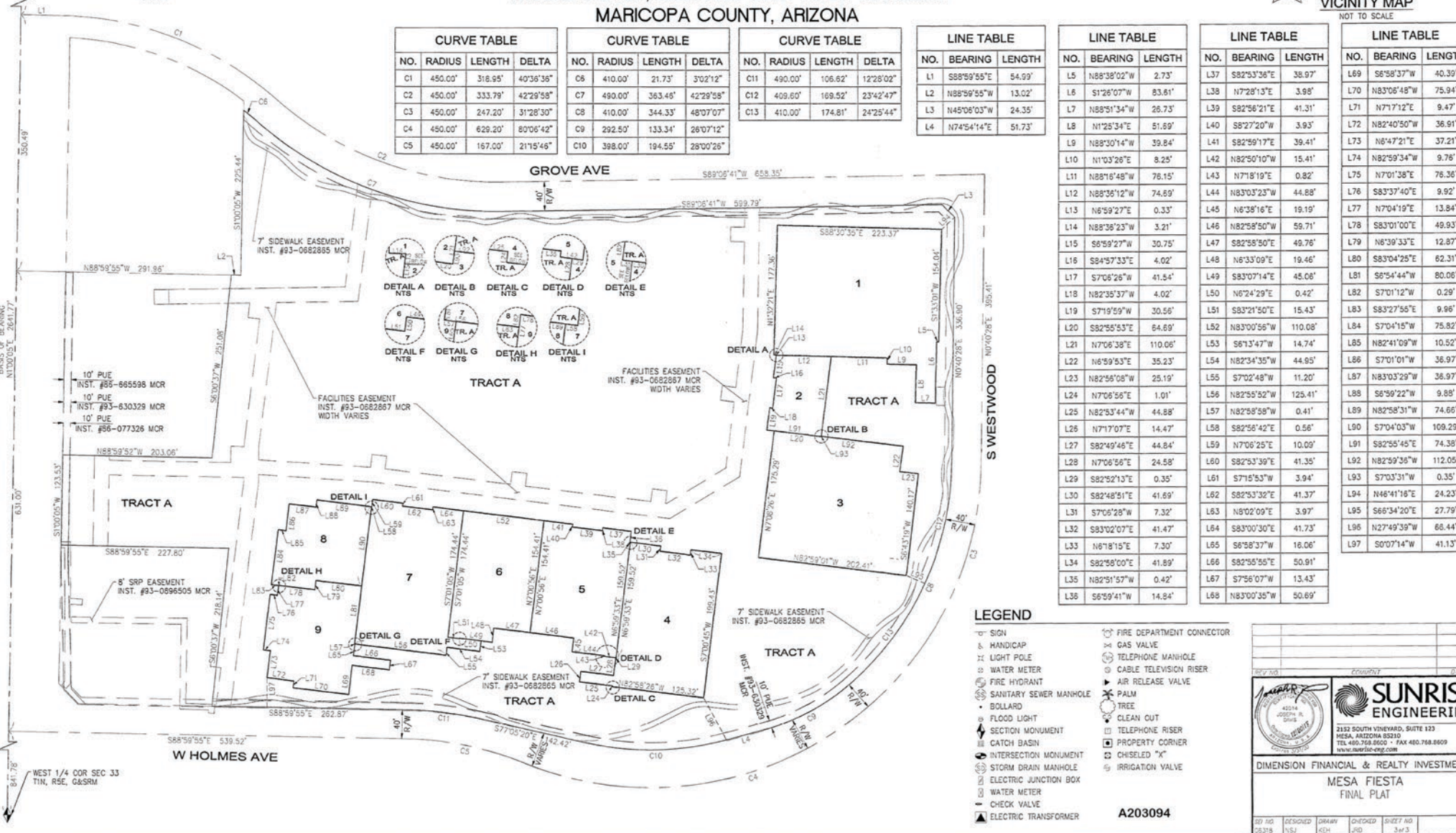
| LINE TABLE | | |
|------------|-------------|---------|
| NO. | BEARING | LENGTH |
| L5 | N88°38'02"W | 2.73' |
| L6 | S1°26'07"W | 83.61' |
| L7 | N88°51'34"W | 26.73' |
| L8 | N1°25'34"E | 51.89' |
| L9 | N88°50'14"W | 39.84' |
| L10 | N1°03'26"E | 8.25' |
| L11 | N88°18'48"W | 76.15' |
| L12 | N88°56'12"W | 74.89' |
| L13 | N6°59'27"E | 0.33' |
| L14 | N88°36'23"W | 3.21' |
| L15 | S6°59'27"W | 30.75' |
| L16 | S8°57'33"E | 4.02' |
| L17 | S7°06'26"W | 41.54' |
| L18 | N82°35'37"W | 4.02' |
| L19 | S7°19'59"W | 30.56' |
| L20 | S82°55'53"E | 64.69' |
| L21 | N7°06'38"E | 110.06' |
| L22 | N6°59'53"E | 35.23' |
| L23 | N82°56'08"W | 25.19' |
| L24 | N7°06'56"E | 1.01' |
| L25 | N82°53'44"W | 44.88' |
| L26 | N7°17'07"E | 14.47' |
| L27 | S82°49'48"E | 44.84' |
| L28 | N7°06'56"E | 24.58' |
| L29 | S82°52'13"E | 0.35' |
| L30 | S82°48'51"E | 41.69' |
| L31 | S7°06'28"W | 7.32' |
| L32 | S83°00'07"E | 41.47' |
| L33 | N6°18'19"E | 7.30' |
| L34 | S82°58'00"E | 41.89' |
| L35 | N82°51'57"W | 0.42' |
| L36 | S6°59'41"W | 14.84' |

| LINE TABLE | | |
|------------|-------------|---------|
| NO. | BEARING | LENGTH |
| L37 | S82°53'36"E | 38.97' |
| L38 | N7°28'13"E | 3.98' |
| L39 | S82°56'21"E | 41.31' |
| L40 | S8°27'20"W | 3.93' |
| L41 | S82°59'17"E | 39.41' |
| L42 | N82°50'10"W | 15.41' |
| L43 | N7°18'19"E | 0.82' |
| L44 | N83°03'23"W | 44.88' |
| L45 | N6°38'16"E | 19.19' |
| L46 | N82°58'50"W | 59.71' |
| L47 | N82°58'50"E | 49.76' |
| L48 | N6°33'09"E | 19.46' |
| L49 | S83°07'14"E | 45.06' |
| L50 | N6°24'29"E | 0.42' |
| L51 | S83°21'50"E | 15.43' |
| L52 | N83°00'56"W | 110.08' |
| L53 | S6°13'47"W | 14.74' |
| L54 | N82°34'35"W | 44.95' |
| L55 | S7°02'48"W | 11.20' |
| L56 | N82°55'52"W | 125.41' |
| L57 | N82°58'58"W | 0.41' |
| L58 | S82°56'42"E | 0.56' |
| L59 | N7°06'25"E | 10.09' |
| L60 | S82°53'36"W | 41.35' |
| L61 | S7°15'53"W | 3.94' |
| L62 | S82°53'32"E | 41.37' |
| L63 | N8°02'09"E | 3.97' |
| L64 | S83°00'30"E | 41.73' |
| L65 | S6°58'37"W | 16.06' |
| L66 | S82°55'55"E | 50.91' |
| L67 | S7°56'07"W | 13.43' |
| L68 | N83°00'35"W | 50.69' |

| LINE TABLE | | |
|------------|-------------|---------|
| NO. | BEARING | LENGTH |
| L69 | S6°58'37"W | 40.39' |
| L70 | N83°06'48"W | 75.94' |
| L71 | N7°17'12"E | 9.47' |
| L72 | N82°40'50"W | 36.91' |
| L73 | N6°47'21"E | 37.21' |
| L74 | N82°59'34"W | 9.76' |
| L75 | N7°01'38"E | 76.36' |
| L76 | S83°37'40"E | 9.92' |
| L77 | N7°04'19"W | 13.84' |
| L78 | S83°01'00"E | 49.93' |
| L79 | N6°39'33"E | 12.87' |
| L80 | S83°04'26"E | 62.31' |
| L81 | S6°54'44"W | 80.06' |
| L82 | S7°01'12"W | 0.29' |
| L83 | S83°27'56"E | 9.96' |
| L84 | S7°04'15"W | 75.82' |
| L85 | N82°41'09"W | 10.52' |
| L86 | S7°01'01"W | 36.97' |
| L87 | N83°03'29"W | 36.97' |
| L88 | S6°59'22"W | 9.88' |
| L89 | N82°58'31"W | 74.66' |
| L90 | S7°04'03"W | 109.29' |
| L91 | S82°55'45"E | 74.38' |
| L92 | N82°59'36"W | 112.05' |
| L93 | S7°03'31"W | 0.35' |
| L94 | N46°41'16"E | 24.23' |
| L95 | S66°34'20"E | 27.79' |
| L96 | N27°49'39"W | 66.44' |
| L97 | S0°07'14"W | 41.13' |

ALMA SCHOOL ROAD

NW COR SEC 33
T1N, R5E, G&SRM
816.50'
356.48'
631.00'
841.76'
WEST 1/4 COR SEC 33
T1N, R5E, G&SRM



LEGEND

- SIGN
- HANDICAP
- LIGHT POLE
- WATER METER
- FIRE HYDRANT
- SANITARY SEWER MANHOLE
- BOLLARD
- FLOOD LIGHT
- SECTION MONUMENT
- CATCH BASIN
- INTERSECTION MONUMENT
- STORM DRAIN MANHOLE
- ELECTRIC JUNCTION BOX
- WATER METER
- CHECK VALVE
- ELECTRIC TRANSFORMER
- FIRE DEPARTMENT CONNECTOR
- GAS VALVE
- TELEPHONE MANHOLE
- CABLE TELEVISION RISER
- AIR RELEASE VALVE
- PALM TREE
- CLEAN OUT
- TELEPHONE RISER
- PROPERTY CORNER
- CHEISELED "X"
- IRRIGATION VALVE

A203094

DATE: _____

DESIGNED BY: _____

DRAWN BY: _____

CHECKED BY: _____

SHEET NO: _____

3 of 3

SUNRISE ENGINEERING
2132 SOUTH VINEYARD, SUITE 133
MESA, ARIZONA 85210
TEL: 480-788-8600 • FAX: 480-788-8609
www.sunrise-eng.com

DIMENSION FINANCIAL & REALTY INVESTMENTS

MESA FIESTA
FINAL PLAT